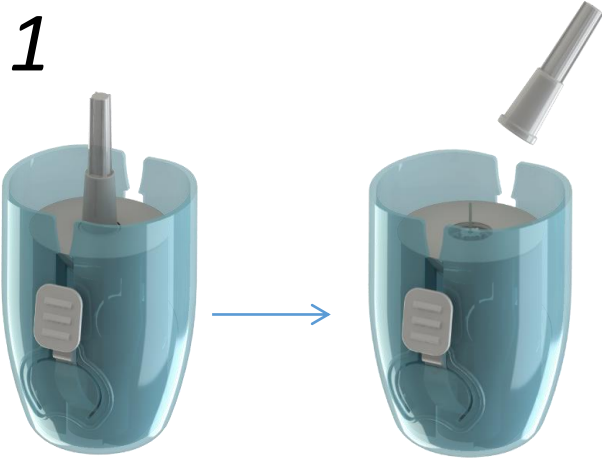




Device Type
Dosage Type
Route of Administration
Needle Insertion
Activation Method
Insertion Feedback

Insuport
Depends on Injector
Subcutaneous
Automatic
Button Press
Click Sound & Dual visual Feedback

Handling Instructions:



Remove the Needle cap from the port



Pull away the inserter from the skin and secure the port properly



Discard the device in sharps container

Key Features

- ✓ Simple 3 step operation
- ✓ Button Press activation
- ✓ Auto needle insertion
- ✓ Click Sound and visual feedback
- ✓ One-handed operation
- ✓ Permanently hidden needle
- ✓ Preconfigured or customized client specifications